

# activity report

highlights of the year  
2018,,







There will be no food without agriculture, and no agriculture without organized and supportive farmers . ”

- P.3** Word from the Chairman
- P.4** Key figures and action scope
- P.5** 2018 Overview of partner farmer organizations
- P.6** Financial elements
- P.7** Operational teams
- P.8** Operational strategy
- P.9** Governance
- P.10** Quality approach
- P.11** Events: highlights of 2018

#### **P.12-23** Actions

- P.12** Organizational and strategic support of FOs
- P.16** Support for the representation functions of FOs
- P.18** Support for the technical functions of FOs
- P.20** Support for the training and professional integration of young farmers
- P.22** Support for the economic functions of FOs

- P.24** International alliances and collectives
- P.25** Technical and financial partners
- P.26** The actions implemented by Fert in 2018





# Word from the Chairman

**Jean-François Isambert,**  
Chairman of Fert  
Chairman of AgriCord\*

Being concerned about what is happening in the world, we can see that the world's food balances are fragile.

This trend is bound to increase as we will move from 7.5 billion people to 10 billion in 2050. And the emergence of a global middle class (1.8 billion in 2000 and 5 billion in 2030) will also result in lifestyle changes, increased food consumption, and a demand for better food quality.

In the same time, taking into account global warming, and predicting that two-thirds of the world's population will live in urban areas, the FAO - Food and Agriculture Organization of the United Nations – is only considering a 4% increase in cultivated land by 2050.

In a context where demographic, water, land, climate, land and geopolitical disparities are increasing, we must rethink the development of agriculture in countries with large rural populations.

Our agri-agency Fert was created in 1981 on the initiative of leaders of cereal growers' organizations who considered it urgent to contribute to the development of agriculture in countries that have large rural populations, particularly in Africa, by encouraging dialogue between farmers.

\* Until March 2019

*Agricultural development can only be achieved through women and men who are actors of their own development, free to undertake and organize themselves.*

”

We are here to help farmers to get organized, to choose the agriculture they want to do and how they want to do it, within the framework of an open, diversified and environmentally friendly agriculture. It is not a question of offering a model, but common values of equality and access to education for all, within the framework of family farming that can be transformed. It is essential that these farmers can earn an income from their work, support their families and contribute to food supply of their countries.

In 2018, with the support of cereal growers' organizations, of Unigrains and many other partners, and within the international alliance AgriCord, Fert supported the development of farmer organizations in 11 countries, representing 87,400 family farms.

With the whole Fert team, I sincerely thank all the institutions, foundations, companies, associations and more generally all those who have accompanied us throughout the year.

# key figures and action scope



35  
national or  
sub-national FOs



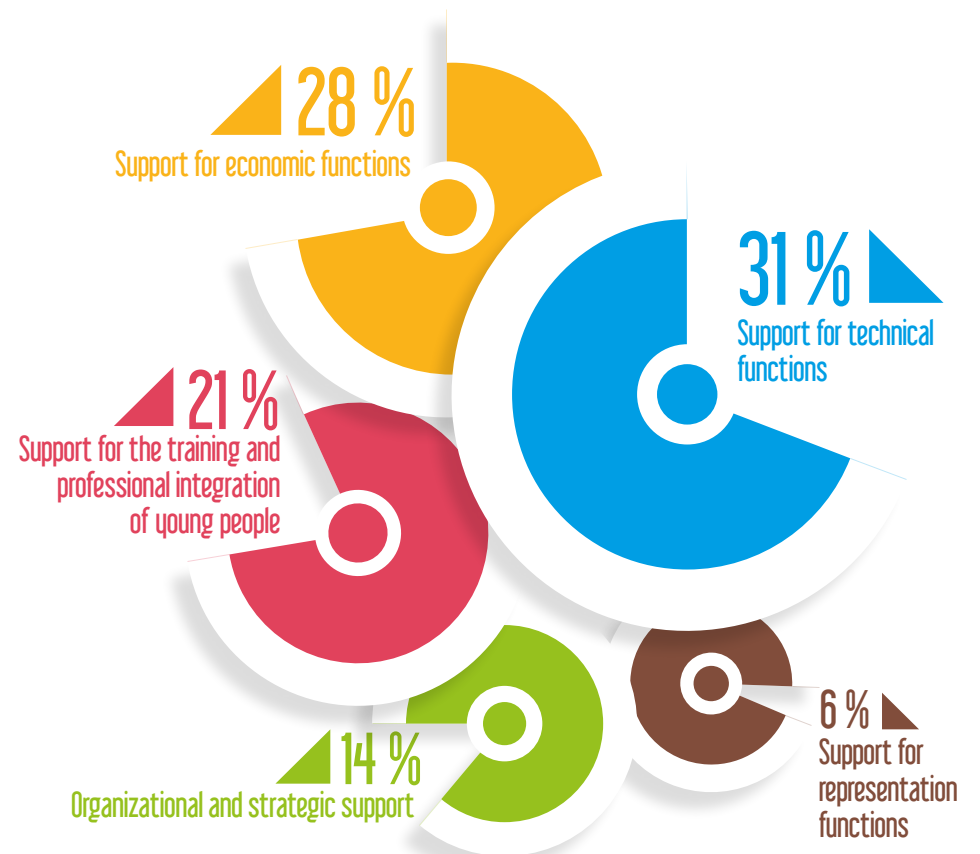
2,230  
local FOs



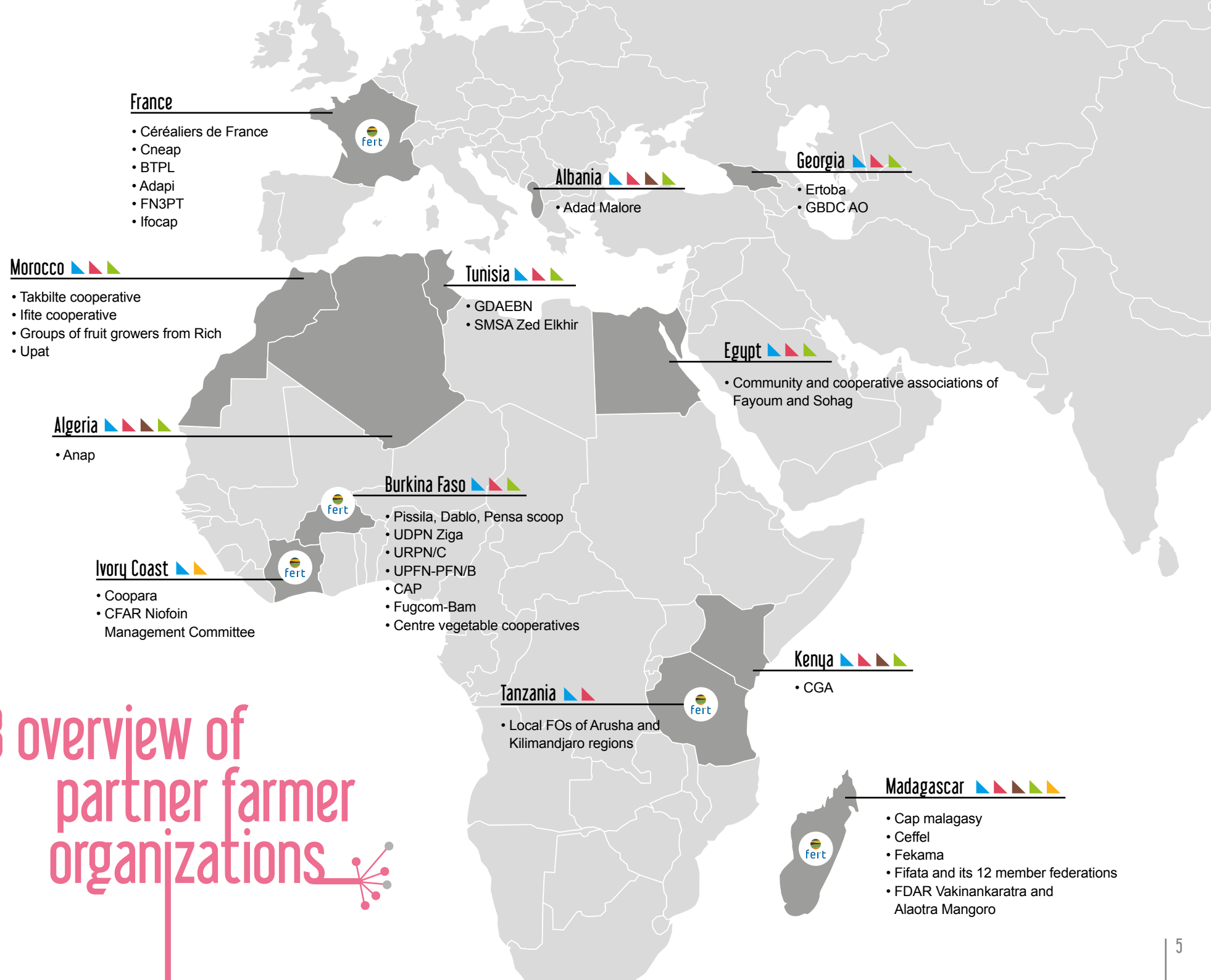
9  
other organizations



87,400  
families involved



# 2018 overview of partner farmer organizations

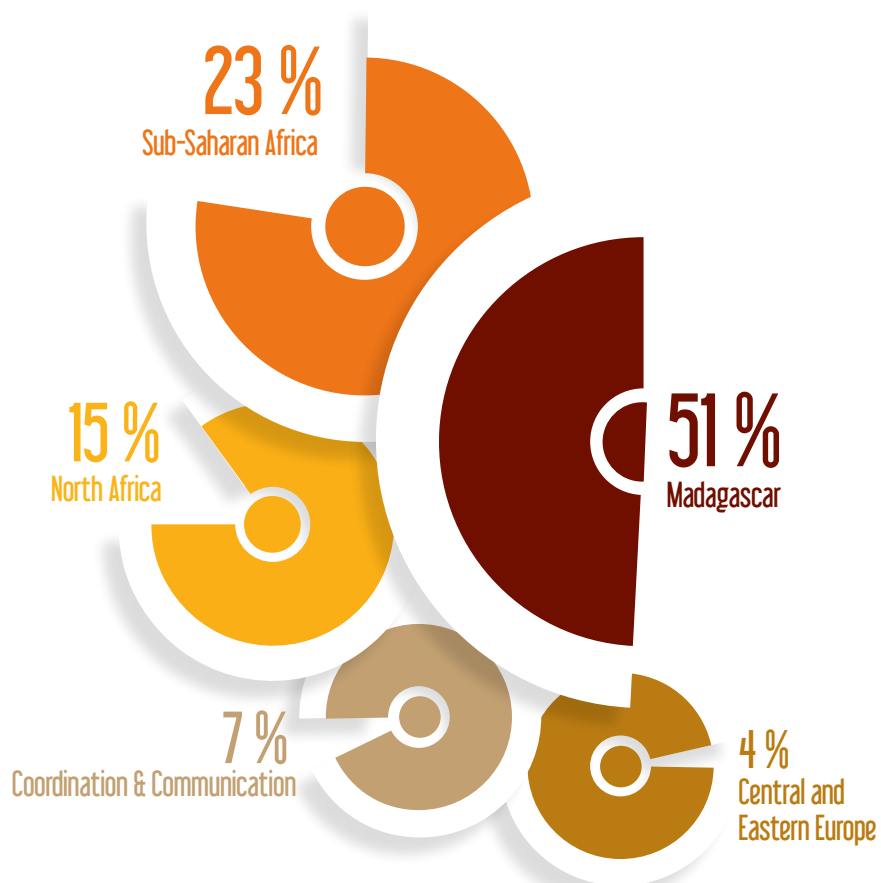


# Financial elements

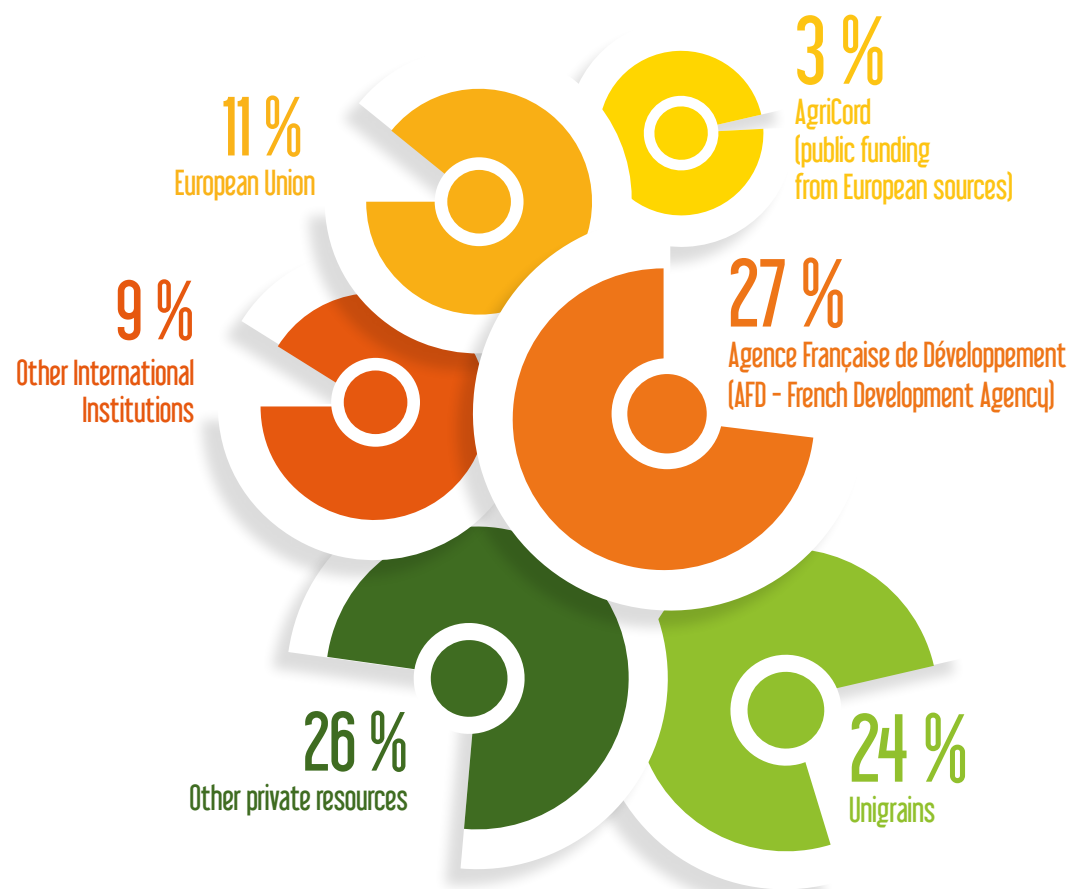
The overall budget mobilized in 2018 is €4.45 million for 27 actions in 11 countries.

The financial resources are 50% from public sources and 50% from private sources.

## 2018 Employment



## 2018 Resources





# Operational teams

**10** employees at the  
headquarter  
including 5 project managers



**8** expatriates  
Burkina Faso, Ivory Coast,  
Morocco, Madagascar, Tanzania



**149** local staffs  
Burkina Faso, Ivory Coast,  
Madagascar, Tanzania



## Contacts

of Fert representations in 3 countries (June 2019)

BP 98 Kaya - BURKINA FASO

Tel : +226 24 45 21 52

[fertburkina@gmail.com](mailto:fertburkina@gmail.com)

*Fert has also an office in Ouagadougou  
(located in Ouaga 2000)*

BP 996 Abidjan 25 - COTE D'IVOIRE

Tel : +225 68 23 96 64

[fert.civ@gmail.com](mailto:fert.civ@gmail.com)

BP 372 - 110 Antsirabe - MADAGASCAR

Tel : +261 33 12 41 615

[fert@moov.mg](mailto:fert@moov.mg)

# Operational strategy



At the start of the 1980s, the Céréalières de France group entrusted Fert with the task of cooperating with farmers in developing countries that were seeking to organize themselves to become key players in their approach to development, with the conviction that, whatever the country or level of development, farmers are first and foremost entrepreneurs responsible for their choices, and that they can only tackle certain challenges within the framework of organizations that they create themselves.

In the spirit of origin, the Board of Directors confirmed in 2013 that Fert's task was to support farmers seeking to organize themselves to solve the problem or problems encountered: Fert's role is to work alongside them to identify solutions, and then help them to implement them.

Farmers expressing their needs in view of getting support from the French agricultural profession is therefore the distinctive criterion for the association to make strategic and operational choices. The effectiveness of Fert's action is measured based on the results achieved in terms of creating and strengthening farmer organizations.

The Board of Directors as thereby set the following directions for the coming year:

## In relation to Fert's partners in developing countries

Entering a new country and/or a new intervention are decided upon in view of supporting farmer organizations, whether they need to be created or already exist. Fert listens to the needs expressed by the farmers themselves (supplying inputs, improving techniques, training, advice, credit, commercialization etc.). Fert supports the changing nature of these needs, for example, towards placing products on the market and the issues of product quality. For this reason, Fert refrains from responding to the requests of countries or funders that would consider it an "operator" in an approach that would not favor support for farmer organizations based on needs as expressed by farmers. When, during an intervention, Fert is led to provide support for local development actions or public financing structures for the rural environment, it does so in connection and with the support of local farmer organizations.

Fert will focus its interventions on Africa in the broad sense: Mediterranean region, Sub-Saharan Africa and Madagascar. Fert will be open to interventions in other regions, particularly if opportunities for partnerships with French agricultural organizations or businesses emerge.

## In relation to the French agricultural world

Within the Céréalières de France group, Fert finds its origin and its reason to be, as well as its means of autonomy. Fert's approach relies on the values, experience and expertise of the French agricultural profession: pooling resources, solidarity and cooperation. Fert mobilizes the expertise and experience of French farmer organizations, officials, employees and former employees. Synergies exist and will be developed with Afdi, whose approach is complementary. Fert is attentive to requests from businesses. If the plans of the business and Fert overlap, actions may be envisioned. In any case, in terms of businesses, Fert positions itself as the guarantor of an ethical approach, in the sense of "defending the interests of farmers". Development education, particularly in French agricultural education institutions, is an integral part of Fert's mission.



# Governance

Fert's Board of Directors, chaired by Jean-François Isambert, is involved in the strategic orientations and management of the association.



Christophe TERRAIN



Philippe PINTA



Bernard GUIDEZ



Anne-Claire VIAL



Denis CASTAING



Henri DE BENOIST  
*Honorary chairman*



Jean-François ISAMBERT  
*Chairman*



Paul-Henri DOUBLIER



Jean-Marie BEHAGHEL  
*Secretary Treasurer*



Martial MARGUET



Bertrand VENET



Michel MOLLARD

# Quality approach

Since 2016, Fert has been dedicated to a quality approach in order to structure the improvement of its practices. The aim is to involve employees, in collaboration with directors, in a non-standard approach to continuous improvement based on a self-diagnosis model adapted to NGOs (Madac – Self-diagnosis and continuous improvement model).

In **2018**, four *Quality Workshops* resulted in concrete proposals for tools, guides and advice that were valued by all.





February / March

April

September

October

November

December



### Internal seminar in Normandy

- > Fert teams visits and group discussions



### EuroChallenge

- > 13th cooperative half-marathon organized by Axereal: €1 per registered runner donated to Fert



### Milk event

- > Round table co-organized by Fert and the BTPL on joint actions in Brazil, Madagascar and Georgia



### Discreet but supportive

- > Shooting in Madagascar of an episode of the program "Terres de Partage de Passion Céréales"



### ReThink Eat

- > Fert's talk during the Unigrains ReThink Eat forum



### Open Agrifood

- > Fert's speech during the plenary session "Africa is calling" you of the Open Agrifood



### Capitalization - Conservation agriculture in the Maghreb

- > Publication of a summary report on 30 years of Fert actions

Events:  
Highlights of  
2018



# Actions

## Organizational and strategic support actions of FOs

Fert **supports the development of technical, economic and representation services** covering all functions useful to farmers and supports the creation and development of farmer organizations by leading professional structuring dynamics and supporting organizations towards sustainability.

*The following pages illustrate the approach without presenting the 2018 activity in an exhaustive way.*



### Madagascar

Consulting, experimentation and training association in fruits and vegetable • **Ceffel**

Ceffel - a national FO and a member of the Fifata Group, at the service of the fruit and vegetable value chain - implements training and experimentation and supports farmers in the adoption of agro-ecological practices and the structuring of technical and economic services. In 2018, Fert - in collaboration with FN3PT - supported Ceffel in its strategic reflection for the relaunching of the potato seeds value chain in Madagascar.

59  
farmers multipliers of  
potato seeds

300  
farmers

150  
technicians  
trained



The Chairman  
of Ceffel

*The organization of seed multiplication within the Fifata group should be exemplary and should constitute a model at the national level.*







## Algeria

National Association of Professional Beekeepers  
**Anap**

Created in 2015, Anap seeks to meet the main challenges faced by Algerian beekeepers: lack of technical training, genetic loss of local bees, varroa mites' infestations, slight differentiation of Algerian honeys on a highly competitive market...

In 2018 and in partnership with Adapi, Fert supported Anap in improving its governance, recruiting a facilitator and setting up local relay facilitators. This enabled it to establish itself in the territory, to operationalize the first insemination stations for a better genetic selection of bees and to set up a honey analysis laboratory in Blida.

160

members

2

insemination  
stations

1

honey analysis  
laboratory



The Chairman of Anap

*The objective of Anap is to anticipate tomorrow's challenges that beekeepers will face, such as the congestion in honey-growing areas or the tightening of health rules, by professionalizing the practices of the most motivated beekeepers throughout the country.*



## Tunisia

Agricultural development group  
of northern sheep farmers  
**GDAEBN**

GDAEBN federates sheep farmers of Silico-Sardinian, Thibar black and barbaric sheep... in the northern part of Tunisia.

In 2018, Fert helped the group to structure itself to develop an information and management system for sheep farms (Sigeo), produce a user guide and record data on 1,600 sheep. In collaboration within Coram – a French collective of local mountains sheep – Fert organized a study trip to the Atlantic Pyrenees for the leaders of GDAEBN; it enabled them to become aware of the collective's strength for the improvement and enhancement of local sheep.

60

farmers

1,600

sheep monitored  
in the Sigeo



The Chairman of GDAEBN

*The development of Sigeo was initiated in 2011. In 2018, the priority was to finalize the first modules and launch them to raise awareness among farmers and bring them more together.*



## Burkina Faso

Vegetable cooperatives in the Centre  
region

In Burkina Faso, the Ohada law requires farmer groups and their unions to become cooperative societies. In 2018, to support them in this transition, Fert, supported by the Brittany region and in collaboration with the Centre Regional Council, led self-diagnosis and group discussion workshops with 9 vegetable cooperatives bringing together 860 farmers, including a majority of women on the outskirts of Ouagadougou.

860

farmers

9

cooperatives



Kombi ipaala  
vegetable growers

*Before, we used to wait for the partners to come and tell us what they wanted to do with us. Now, thanks to the diagnosis, we know our strengths and weaknesses and we will be able to develop our own action plan, carry out the actions we have decided ourselves and go to partners to support us.*



Organizational  
and strategic  
support of FOs

**ZOOM  
ACTIONS**



# Actions

## support for the representation functions of FOs



### Madagascar

National Confederation of Organizations for  
the progress of farmers • **Fifata**

With its strong integration in 50% of the Malagasy regions, Fifata has been working for 30 years to defend the interests of family farmers.

In 2018, in addition to developing services for its members, particularly in the areas of technical training and animal health, Fert helped Fifata to consolidate its position in national (chamber of Agriculture, Agricultural Development Fund, National Council for Agricultural and Rural Training, National Council for Family Farming) and international (World Rural Forum, Confederation of Southern African Agricultural Unions) bodies.

560  
leaders trained, including  
37%  
of women

12  
regional FOs

18,800  
families  
accompanied



Fifata

*Fifata reaffirms its commitment to professional and competitive family farming that improves farmers' incomes and therefore their living conditions. This agriculture is a powerful brake on the exodus to urban centers and contributes to food security while promoting sustainable production and natural resource management systems.*



### Albania

Association for the development  
of fruit farm in mountain areas  
**Adad Malore**

Adad Malore federates 32 fruits farmer groups in mountain areas.

In 2018, as part of a program entitled “farmer organization and stakeholder consultation”, Fert supported Adad for the sixth consecutive year in its professional representation and lobbying missions. The collaboration agreement between Adad and the Ministry of agriculture has been renewed and a national consultative body for the development of the value chain has been created on Adad's initiative. The main issues on which Adad has been able to make proposals include the Ministry's support schemes, the Land Tenure Act and the facilitation of fruit export and import conditions.



Adad

*Farmers' income will increasingly depend on their ability to better respond to a national and international market, which requires a better knowledge of these markets and a good strategy in terms of variety choice, orchard management, commercial options, packaging, storage or processing. Consultation between farmers, economic operators and public authorities will be the key to success.*



32%  
of domestic apple  
exports

32  
groups

830  
members



# Actions

## support for technical functions of FOs



Cap Malagasy association, a member of Fifata Group, supports development of family farms in 5 regions of the highlands. In 2018, Fert's support enabled 8,450 family farms to benefit from local agricultural advice. There has been a significant development of agro-ecological practices, particularly in regions close to the capital, yield increases, the adoption of improved livestock farming techniques and improved storage conditions, which have reduced the hunger gap.



A Cap Malagasy advisor

*Jeannot Hervé decided, on the advice he received, to introduce potato cultivation after a successful trial, to improve gasy chicken production and to abandon pig farming, which was an unprofitable workshop. He became a potato seeds producer and, thanks to the income from the sale of the seeds, he was able to change his roof into a sheet metal roof and build up savings.*



**Kenya**  
Cereal Grower's Association • CGA

Following a pilot phase (2016-2017) of agricultural service development in Narok and Nakuru counties, Fert supported CGA in 2018 in the operationalization of its service strategy, in particular through the implementation of test platforms. 7 platforms involving farmers from several groups are used for exchanging on cultivation practices, varieties, treatments... Fert also facilitates a study on the development, implementation and financing of services as well as CGA's reflection on its member service policy.



CGA

*The benefits of fertilizers can only be realized if they are used efficiently. There are 4 factors to be controlled regarding fertilizers: a good application rate, good quality, at the right time and in the right place.*



**Egypt**  
Community and cooperative associations in Fayoum and Sohag

To address farmers' requests for technical uses (production cycle, improved practices, etc.) three community development associations in Fayoum governorate and five in Sohag governorate - accompanied by Fert and its partner NSCE - have developed training courses. A total of 300 farmers benefited from advice on the production olives, grapes, mangoes, pears, dates, onions and tomatoes, as well as practical training in entrepreneurship.



A Leader of Abo Ksah association

*Access to mango pruning training has given us a real opportunity to improve our practices on an ancestral crop and increase our yields within the first year.*

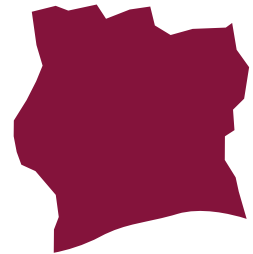


ZOOM  
ACTIONS



# Actions

## support for the training and professional integration of young farmers



### Ivory Coast

Creation of an agricultural and rural training center in Niofoin

The Louis Dreyfus Foundation has requested Fert support for the creation of an agricultural and rural training center in Ivory Coast. Based on opportunity and feasibility studies carried out in 2017-2018, the Poro region in the north was chosen for the setting up of the center. The project is based on local communities and in particular farmers and their organizations. Fert also led discussions with the support of two professional agricultural managers, Chairmen of agricultural high schools in France, before establishing a local management committee.

- > Land identification and security of a 15-ha site in Niofoin
- > Official opening of the CFAR planned for October 2019



A French farmer,  
A Chairman of  
agricultural high school

*It is necessary to rely on professional leaders and on their motivation to develop agricultural training. It is very attractive but it is the only long-term perspective for the collective benefit of a population that really needs it.*



### Madagascar

Federation of agricultural high school of Madagascar • Fekama

Fekama, a member of Fifata Group, federates 5 agricultural high schools that train a new generation of professional farmers; the 5th high school was built in 2018 in the Alaotra Mangoro region, Madagascar's rice storage facility, with the support of many partners. After 3 years of initial training combining courses and practical work, young people benefit from support for the development of their professional project.

Since 2018, some regional farmers' organizations that are members of Fifata have been supporting young people themselves in their professional integration.

336  
young people  
trained

280  
young people  
accompanied in their  
professional  
integration

87%  
of young people  
trained in  
agriculture



A young person  
trained at Befandriana  
high school

*I settled in 2010 starting with a pig farm; two years later I started growing rice on one hectare. I gradually expanded my pig farm and invested in rice farming at the same time, buying zebus and a plough, and renting an additional hectare. In 2015, all my pigs were killed by disease. Before restarting I invested in a solar panel to offer a phone charging service for the whole village; now I plan to buy a small refrigerator to store the vaccines. To ensure year-round food supply, I would like to purchase a straw shredder and husker.*



ZOOM  
ACTIONS



# Actions

## support for the economic functions of FOs



### Burkina Faso

Cowpea farmer organizations in the Central North, North and Central regions

Fert's support in 2018 led to the development of economic services, in particular from Pissila cooperative: joint purchase of 29 t of fertilizer for 400 farmers, sale of 96 t of cowpea, and a study to create a unit to process cowpea into flour that can be incorporated into local bread. All cowpea FOs accompanied by Fert stored 246 t of cowpea and received training on group marketing, contracting and market information systems.

7  
FOs

19,400  
farmers

73%  
of women



3 cowpea women farmers

*Fert has helped us to set up mechanisms to be self-sufficient, such as the fertilizer-savings service. All this has a significant impact on our income; the earnings allow us to participate in family and personal expenses.*



### Georgia

Samtskhe Javakheti Sairy Farmers' association • Ertoba

Fert – in partnership with Ertoba Livestock keepers' Association and GBDC, supports dairy farmers to improve milk quality and productivity in the Samtskhe Javakheti region.

In 2018, Fert and GBDC developed new partnerships with three cooperatives, which collect milk, transform it into cheese and market it on local and national markets. With the support of Savencia Dairy Resources, this was an opportunity to work more specifically on the quality of dairy products, from the farm to the store.

133  
farms  
monitored

6  
dairy cows  
on average  
per farm



The Chairman of a cooperative member of Ertoba

*Many cooperatives have been created over the past three years and driven by the national agency of cooperatives, but often suffering from a lack of day-to-day functioning. With the help of GBDC, we are working to make the most of our members' milk.*



### Morocco

Al Amal Union of beekeeping cooperatives in Taza • Upat

The 2018 general assembly of Upat represented an important step in expanding the union, which now includes 20 cooperatives, i.e. 280 beekeepers.

Fert is supporting the union in its project to create a beekeeping facility (construction of hives, wax recycling, extraction, etc.) financed under the Green Morocco Plan. Beyond the infrastructure and equipment component, it is a question of asking the right questions in terms of service organization, training and human resources management, economic model, etc.

20  
cooperatives

280  
beekeepers

4 kg  
of honey per hive  
(bee nursery)



An Upat member

*Thanks to the discussions organized by Fert with an ELG and its development unit, we better understand the importance of organizing ourselves internally, but also of projecting ourselves better into our project at the technical, commercial and economic level and of carrying out recruitment process properly.*



ZOOM  
ACTIONS



# International alliances and collectives

Fert is part of alliances and networks dynamics with a mandate as an administrator within the CHD, a collective member of Coordination Sud, and an active contribution to F3E and Inter-réseaux Développement rural.



Created in 1981 by leaders of professional farmer organizations concerned with food problems in developing countries, Fert has been supported by professional cereal organizations for more than 30 years, particularly by Unigrains. More broadly speaking, Fert - as an intermediary between the French agricultural world and farmers in developing and emerging countries - facilitates this meeting between people in a spirit of active solidarity, generating mutual enrichment.



Fert is a member of the international alliance AgriCord, which brings together 14 agri-agencies from 12 countries: Belgium, Brazil, Canada, Finland, France, Germany, Italy, Netherlands, Philippines, Senegal, Spain, Sweden. Supported by farmer organizations of their countries, agri-agencies support the farmers' organization and thus contribute to agricultural development in Africa, Asia, Latin America and Central Europe.



Fert is a member of the Board of the « Institut des régions chaudes de Montpellier SupAgro » and of the « Filières agricoles en Afrique » (agricultural value chains in Africa) working group of the April Foundation's scientific council.



# Technical and financial partners

## In Europe

- Accir
- Afdi
- AGPB
- AGPM
- Adapi
- AFD
- Agir Loire Océan
- AgriCord
- Agrisud
- Apdra pisciculture paysanne
- Arvalis Institut du végétal
- Association Anjou Madagascar
- Association Marcq Madagascar
- Axereal
- BTPL
- CER France - Ambre conseil
- CFSI
- CHD
- CDC développement solidaire
- CDEO64
- Cirad
- Club Demeter
- Cneap
- Coordination Sud
- Coram
- DGD
- DGIS
- Electriciens sans frontières
- F3E
- Fida
- Firmenich
- FN3PT
- FNPL
- Fondation Addax & Oryx
- Fondation Avril
- Fondation Louis Dreyfus
- Forum Rural Mondial
- France export Céréales
- GIZ
- Gret
- La Guilde Européenne du Raid
- Icar
- IECD
- Ifocap
- Institut Robin des Bois
- Inter Réseaux Développement Rural
- Iram
- IRC Montpellier SupAgro
- UNMFREO
- Passion céréales
- REAP AAOI
- Région Bretagne
- Réseau international FAR
- Savencia Ressources Laitières
- Synergie solaire
- Trias
- Un filleul pour Madagascar
- Unigrains
- Union européenne
- Université de Wageningen
- Zebunet

In order to support farmers in their desire to implement the services necessary for their activity, Fert and partner farmer organizations mobilize numerous actors (associations, institutions, foundations, companies), who are committed to providing skills and resources at the service of initiatives that are supported.

## In the intervention country

### Albania

- Ambassade de France
- Ministère de l'agriculture

### Algeria

- AREA-ED
- ITELV

### Burkina Faso

- Apme.2a
- Aprossa Afrique verte
- Conseil régional du Centre
- Cetrapa
- Inera
- DPAAH
- DRAAH

### Ivory Coast

- LDC Côte d'Ivoire
- PNMR

### Egypt

- NSCE
- Université de Fayoum

### Georgia

- Acda
- Ministère de l'agriculture géorgien
- NFA
- Collège professionnel Opizari

### Kenya

- Kalro
- Ministère de l'agriculture

### Madagascar

- AD2M
- Agha Khan
- Agrivet
- Amadese
- Authentic Products
- BRM Int.
- Cecam
- Cite
- Cnaf
- CNFAR
- Commune urbaine d'Antsirabe
- DIREL
- DRAE
- DSV
- Energie Technologie
- FAR Mada
- FDA
- FDAR VAK et ALM
- Fifamanor
- Fofifa
- Fondation BOA
- FTHM
- GSMD
- Guanomad
- Imavet
- Le Relais
- MDB

### MPAE

- Pingos
- Projet Aropa
- Projet ASA
- Projet Formapro
- Projet Prosperer
- Région Aloatra Mangoro
- Région Vakinankaratra
- Réseau Far Mada
- Réseau Soa
- ONG Bel Avenir
- SIF
- TT (chambre d'agriculture)

### Morocco

- DPA de Taza
- Fimap
- ORMVA du Tafilalet

### Tanzania

- Juwame
- Ministère de l'agriculture
- Moshi cooperative university

### Tunisia

- Ager
- INRAT
- CRDA
- CTV de Sidi Makhlouf
- GIVLait
- IRA
- OEP

# The actions implemented by Fert in 2018



Geographic area	Countries	Partner organization / action	Start & End of the current phase	2018 Budget (in Euros)	Main financial partners
Central and Eastern Europe	Albania	ADAD: organization of farmers and consultation between stakeholders	2016 - 2018	241,000	Fert, GIZ, Esfim, Ministère agriculture albanais
	Georgia	GBDC-ERTOBA: development of the dairy economy in the Lesser Caucasus	2018 - 2021	99,000	Fert, AgriCord/DGIS
Sub-Saharan Africa	Burkina Faso	COWPEA UNIONS: development of the cowpea value chain	2017 - 2022	331,000	Fert, Accir, UE/Gret, AFD/TransFert, CFSI
		VEGETABLE FO: support to Fugcom and to Center's vegetable cooperatives	2018 - 2019	83,000	Fert, AgriCord/DGD, Brittany region
	Ivory Coast	COOPARA: support for the professional integration of young farmers	2018 - 2020	106,000	Fert, AFD/TransFert
		CFAR: creation of an agricultural and rural vocational training center	2018 - 2021	85,000	Foundation Louis Dreyfus, Montpellier SupAgro
	Kenya	CGA: development of local services in Narok and Nakuru counties	2018 - 2020	151,000	Fert, AFD/TransFert
	Tanzania	ADEPAK: agricultural development in the Arusha and Kilimandjaro regions	2015 - 2018	180,000	Fert, AFD/TransFert
	Madagascar	FIFATA: accompaniment of Fifata, Malagasy national FO	2018 - 2020	109,000	Fert, AgriCord/AFD, AFD/TransFert, Aropa, Formaproduct, Africa rice, FDA, Apdra ...
		FIFATA/RFO: support to the 12 regional FOs that are members of Fifata	2018 - 2020	253,000	
		FIFATA/FLP: training of farmers' leaders and FO technicians	2018 - 2020	49,000	AFD/TransFert
		FEKAMA: Federation of 5 agricultural high schools, for the training and professional integration of young farmers	2016 - 2019	685,000	Fert, AFD, Cneap, Icar, Un Filleul pour MDG, Marcq MDG, F° Addax & Oryx, BOA, Synergie solaire, CDC Dvt solidaire, FDA
		CAP MALAGASY: development of agricultural advisory services	2018 - 2020	218,000	Fert, AFD/TransFert
		CEFFEL: experimentation and training for the development of the fruit and vegetable value chain	2018 - 2020	229,000	Fert, AFD/TransFert, UE, Esfim, FDA ...
		PROTANA: professionalization and organization of agricultural farmers in the South of Antananarivo – Fruit, vegetable and chicken value chains	2015 - 2019	370,000	Fert, UE, Agir Loire Océan
		FRDA VAK: support for the Regional Agricultural Development Fund - Vakinankaratra	2016 - 2019	287,000	AFD/PAPAM
		FRDAALM: setting up a Regional Agricultural Development Fund - Alaotra Mangoro	2017 - 2021	206,000	AFD/PAPAM
			2018 - 2020	174,000	Fert, AFD/TransFert
	Multi-countries	TRANSFERT: the FOs, levers for the development of agricultural economies	2018 - 2020	174,000	Fert, AFD/TransFert
North Africa	Morocco	UPAT: development of beekeeping in the province of Taza	2018 - 2020	718,000	Fert, AgriCord/DGD, Fida/Paopa, AFD/Opsat
		COOP ARBO: support for apple growers in the Rich district			
		DEVELOPMENT: exploration of the dairy value chain			
	Algeria	ANAP: support for the national association of professional beekeepers			
	Tunisia	GDAEBN: support for group of northern sheep farmers			
SMSA ZED ELKHIR: development of she-camel milk production					
Egypt	DEVELOPMENT: identification of new partnerships				
	FAYOUM: support for fruit growers and their organizations				
		SOHAG: support for vegetable growers and their organizations			





5, rue Joseph et Marie Hackin  
75116 Paris  
Tel.: +33 1 44 31 16 70  
fert@fert.fr  
www.fert.fr  
LinkedIn: Agri-agence Fert

